

HEROES - CHERNOBYL

VICTIMS 27

photographic
documentation of
damage that requires
urgent repair

damage to roof structures



Exterior walls, facade:

- damaged wall (access to the roof) - 8m²
- roof (roof) damage to the roof slabs -12m²
- damage to the roof -45m²

Internal walls:

- damaged partitions - 6m²

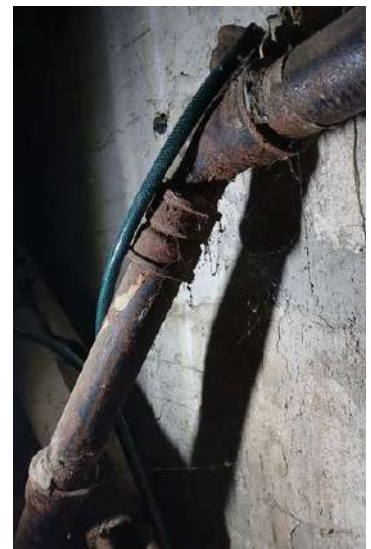


HEROES - CHERNOBYL

VICTIMS 23,25,27

Replacement of
water pipes:
150x3=450m

Replacement
of sewer
pipes:
150x3=450m



SOBORNA 18

photographic documentation
of damage that requires
urgent repair

damage to roof structures

roof area - **546.97 m²**

- approximate area of damage to roof structures - 30m²
- approximate area of damage to the outer wall (access to the roof) -10m²



31 SOBORNA STREET

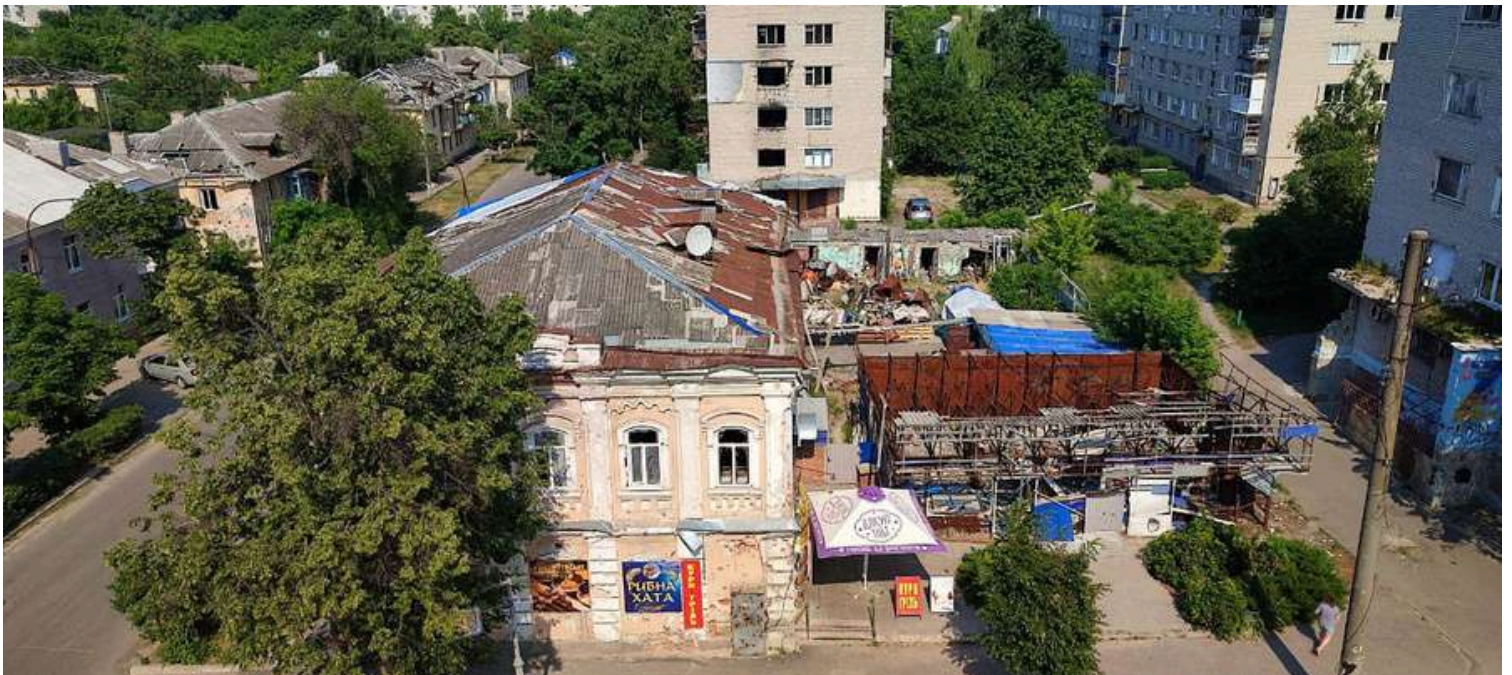
ARCHITECTURAL MONUMENT OF LOCAL SIGNIFICANCE

photographic documentation of damage that requires urgent repair

damage to roof structures



roof area -
303 m²



POKROVSKA 26

photographic documentation of damage that requires urgent repair

damage to roof structures



15 m2 of ceiling damaged
(4 floor slabs)



POKROVSKA 26

photographic documentation of
damage that requires urgent
repair

damage to windows



windows, type 1
(1200x1500) - 104 pcs.

windows, type 2
(1850x1500) - 60 pcs.

windows, type 3
(staircase)
(2200x1200) - 16 pcs.

POKROVSKA 26

photographic documentation of
damage that requires urgent
repair

damage to windows



balcony unit (doors + windows) :

doors (700x2100) - 56 pcs.

windows (1500x1200) - 56 pcs.

POKROVSKA 26

photographic documentation of damage that requires urgent repair

damage to the porch



Replacement of water risers: 240M



Replacement of sewer risers: 240M



HEROES - CHERNOBYL VICTIMS 29

photographic documentation of damage that requires urgent repair

damage to roof structures

roof area -
394.61 m²



HEROES - CHERNOBYL

VICTIMS 29

photographic
documentation of
damage that requires
urgent repair

damage to windows

balcony unit:

window (1350x1350) - 6 pcs.

door (700x2100) - 6 pcs.

stained glass window

2200x2100mm

(staircase) - 2pcs

window type1 / 2500x1500- 8pcs

window type2 / 3900 x1500- 18pcs



HEROES - CHERNOBYL VICTIMS 29

photographic
documentation of
damage that
requires urgent
repair

damage to porches

porch 1 - 2320x3520mm - 8.17m²

porch 2 - 2220x3580mm - 7.95 m²

entrance doors

(2070x3010) - 2 pcs.



restoration of the damaged section of
the outer wall - 1 section

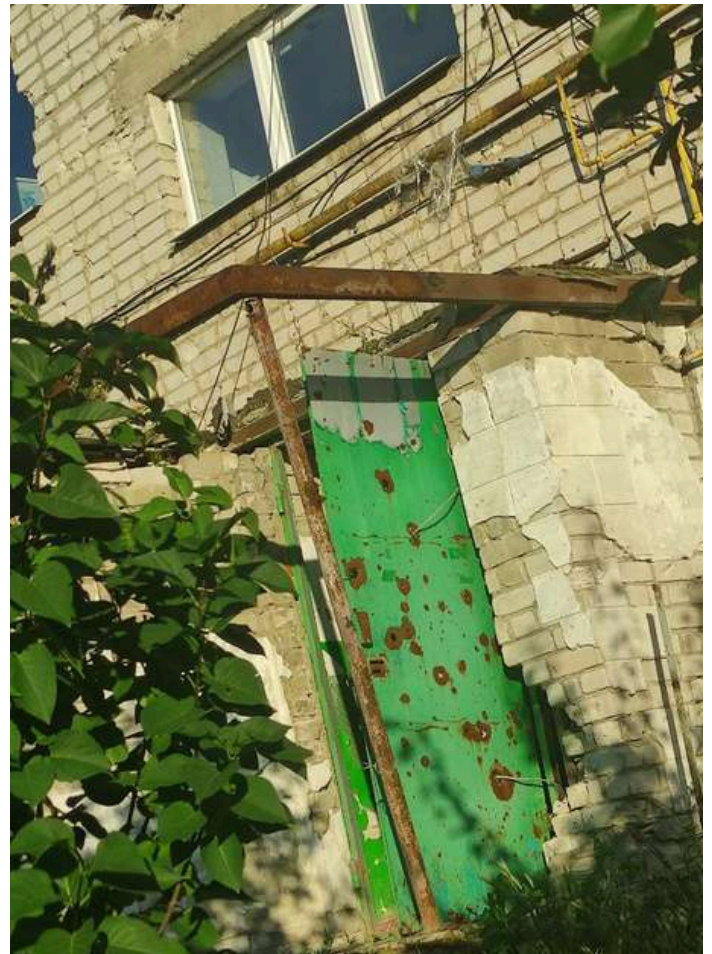


DONETS-ZAKHARZHEVSKY, 6

photographic documentation of damage that requires urgent repair

damage to porches

Number of damaged porches: 4



Front door (sq.m.):

- 30 sq.m. damaged.

Number of damaged windows:

- damaged - 222 units

DONETS-ZAKHARZHEVSKY, 6

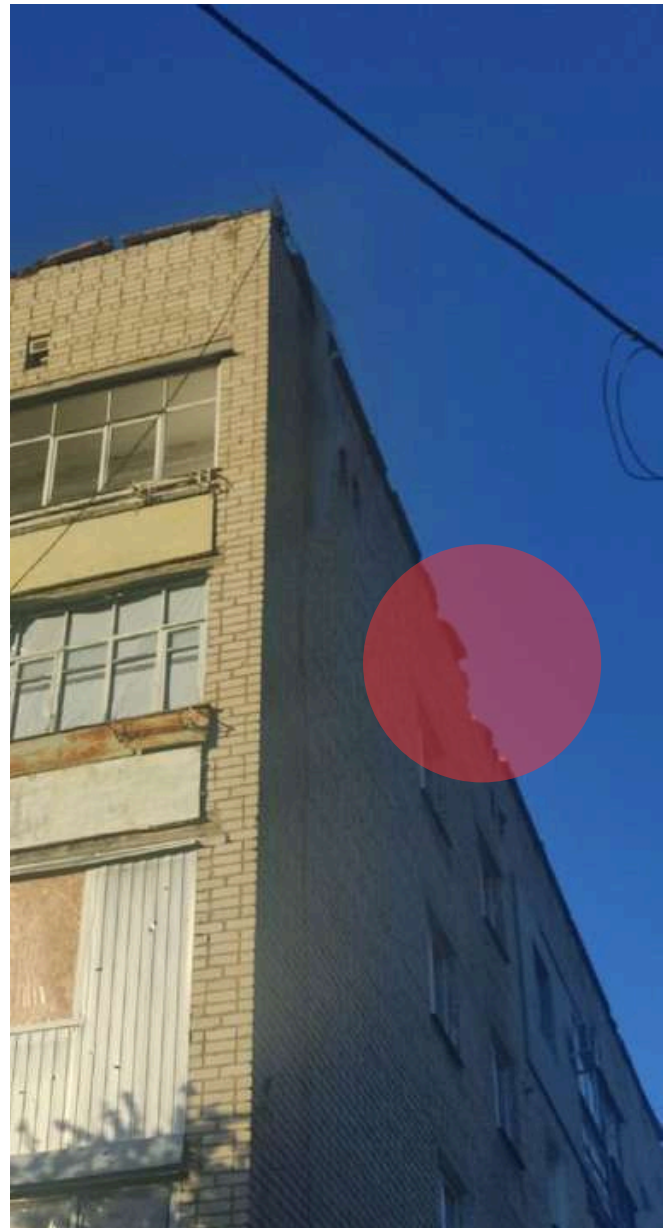
photographic documentation
of damage that requires
urgent repair

damage to external walls



Replacement
of water
pipes: 150m

Replacement
of sewer
pipes: 150m



External walls (facades):

- damaged - 160 sq m (13.3 cubic metres)

Internal walls:

- damaged - 5.5 cubic metres

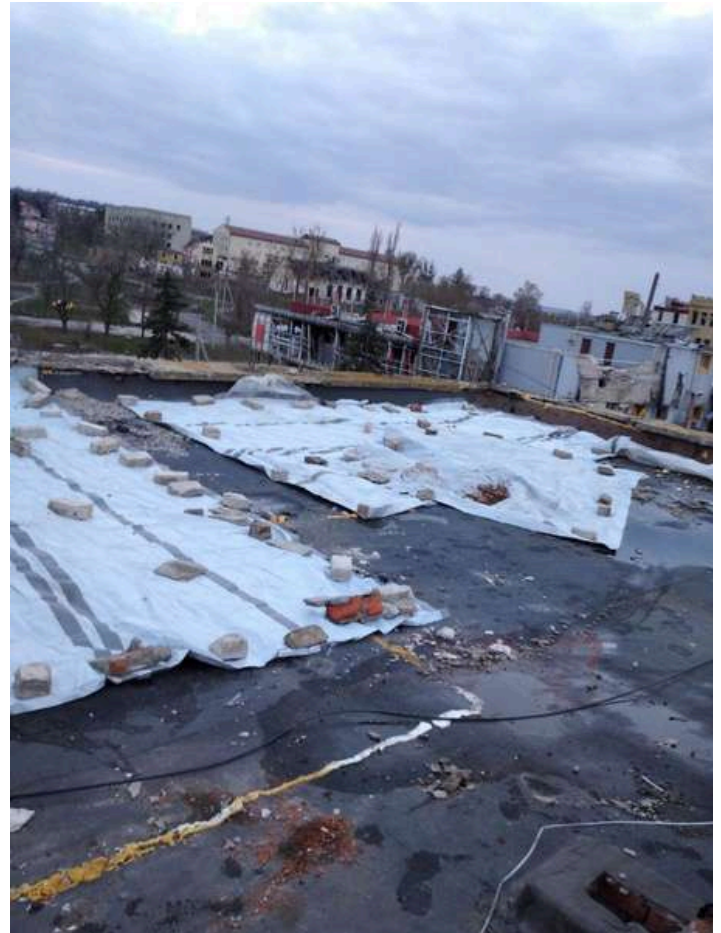
Reinforced concrete structures

- damaged - 1.4 cubic metres (pavement slabs)

DONETS-ZAKHARZHEVSKY, 6

photographic documentation of damage that requires urgent repair

damage to roof structures



Roof (sq m), type of roof and type of coating:

- 120 sq m of roofing was damaged. The roofs are made of reinforced concrete slabs, and the roofs are slightly sloped.

Floor slabs:

- 13 sq.m.

Reinforced concrete structures

- damaged - 1.4 cubic metres (pavement slabs)